

POST SELECTION CHECK SHEET

(For assistance call Customer Service at 1-800-736-5256)

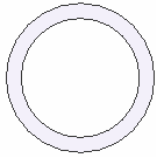
Fax 210-734-6448

www.impactrecovery.com

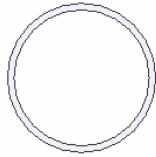
**IMPACT**recovery  
**S Y S T E M S**

"Performance for a Safer Tomorrow"

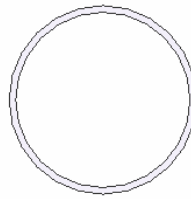
Post Type:



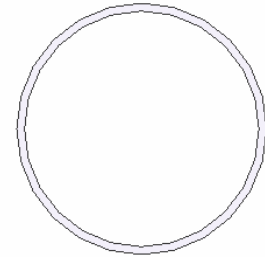
2.375" Multi-Purpose<sup>1</sup>



2.375" Tuff Post<sup>2</sup>



3" Tuff Post<sup>3</sup>



4" Tuff Post<sup>3</sup>

Color:

- White<sup>123</sup>
- Yellow<sup>123</sup>
- Orange<sup>12</sup>
- Grey<sup>1</sup>

- Black<sup>1</sup>
- Red<sup>1</sup>
- Green<sup>1</sup>

Height:

- 28"
- 36"
- 42"
- 48"

Top:



Open Top



Black Cap



Short Squeeze



Long Squeeze

Sheeting:

- Type V High Intensity
- Diamond Grade

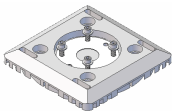
Color:

- White
- Yellow
- Other: \_\_\_\_\_
- Orange

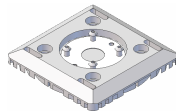
Sheeting Quantity:

- One (std. long squeeze)
- Two (std. tubular)
- Other: \_\_\_\_\_

Base:



Fixed Base



Fixed Base QR



Drivable



Socket



Recessed

Installation:

- Multi-Purpose Sleeve Anchors
- Concrete Screw Anchors
- Two-Part Epoxy
- Super Bundy® Pads

Notes: