

IMPACT RECOVERY SYSTEMS 3/8" FLUSH ASPHALT ANCHOR KIT INSTALLATION INSTRUCTIONS

For Use with IRS Surface Mount Bases and Tuff Curb XLP

Materials Needed for Installation:

- Hammer Drill with 5/8" Bit
- 3/8" Setting Tool and Hammer
- Adhesive with Applicator Gun
 - Hilti HIT-HY Injectible Epoxy
- Compressed Air with Air Gun or Wand
- 3/4" Steel Brush

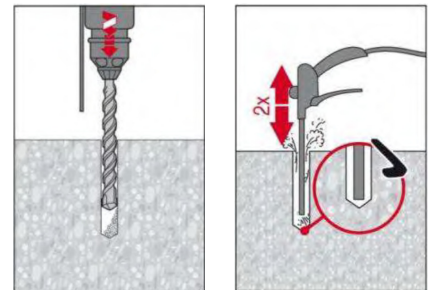


Instructions:

1. Place base on surface and align to desired position (per detailed traffic engineering plans.) Using the base as a template, carefully mark the anchor holes to establish pattern for drilling. Remove the base prior to drilling.

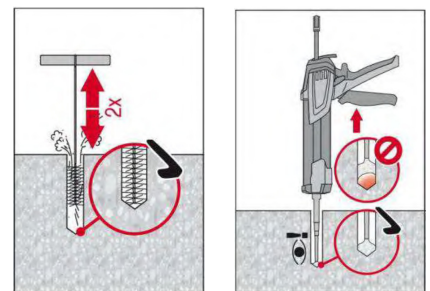


2. Using a guide bar, drill the holes $\text{Ø}5/8''$ x 4-1/2" deep. DO NOT OVERDRILL. Slight setting of the anchor tip into the substrate will allow the setting tool to back out more easily after insertion.

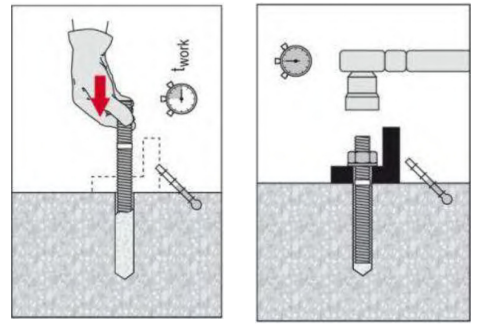


3. Thoroughly clean the hole using compressed air and wand. Remove all residual drilling dust with steel brush then clean again using compressed air.

4. Inject adhesive into hole. Fill the hole approximately 2/3 or as required to ensure that the annular gap between the anchor and the concrete is completely filled with adhesive along the entire embedment length. Approximately 2 ounces per anchor is required.



5. Insert the setting tool into the top of the insert and pound anchor into the adhesive, setting it flush to the surface. Remove the setting tool from the anchor insert. It may be necessary to wait until after the working time of the adhesive unless the anchor tip was slightly embedded.
6. Place the base over the holes and tighten in place using the 3/8" hex bolts and washers. Tighten to 30 – 40 ft.-lbs.



7. Do not insert post into base until adhesive is cured. Follow adhesive manufacturer's recommendations, generally 30 minutes to 24 hours, depending on temperature.

General Notes:

1. Proper substrate is critical for performance of the product. Ensure that asphalt meets current state specifications for composition and compaction and is in generally good, un-cracked condition. Impact Recovery Systems does not warrant asphalt failures.
2. It is important to follow these installation instructions precisely. Do not deviate from the prescribed method of installation.
3. Adhesive volume required may vary and does not include waste from mixing tubes, spillage, or over-filling. Plan accordingly.
4. Follow adhesive manufacturer's recommendations for application temperatures, working-, and cure-times.
5. Periodic maintenance is required for all installations. Please see our maintenance instructions for details.