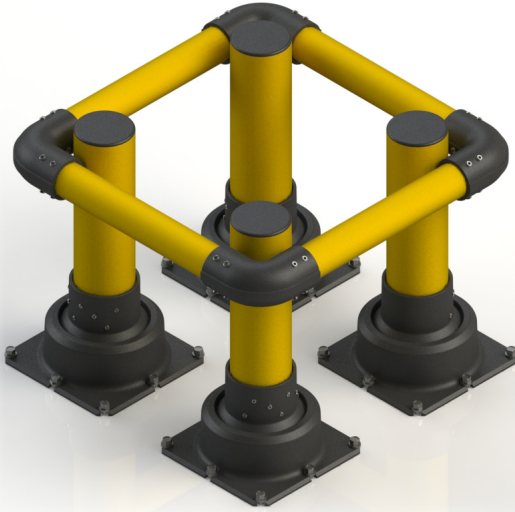




IronFlex Column Protectors Type 3

PROTECTIVE GUARDING - SLOWSTOP®

SPEC SHEET | P/N **SS-T3Y-XX-CP**



Product Specifications

Color	RAL 1023 Yellow Pipe on RAL 9005 Black Pedestal
Temperature Rating	-40°C - 70°C
Pipe Coating	EN-ISO 1461 Galvanized + Polyester Powder Coating
Cast-Iron Coating	Environmentally Friendly Water-based E-Coat + Polyester Outdoor Powder Coating
Cap	Black Plastic
Impact Rating	106.800 joules/589.2kN
Anchors	(32) M16x140 concrete

Recommended Uses

Protects from impact to building structures

Impact Chart

Impact Angle	90°	45°	30°
Rating (joules)	106.800	213.665 calculated	427.200 calculated
Mass (kg)			
	Speed (kph)	Speed (kph)	Speed (kph)
5,000	23.5	33.3	47.1
7,500	19.2	27.2	38.4
10,000	16.6	23.5	33.3
15,000	13.6	19.2	27.2
20,000	11.8	16.6	23.5
25,000	10.5	14.9	21.0
30,000	9.6	13.6	19.2
35,000	8.9	12.6	17.8
40,000	8.3	11.8	16.6

4955 Stout Drive, San Antonio, TX 78219
(210) 736-4477 | 1-800-736-5256 | info@impactrecovery.com

impactrecovery.com

January 2024



©2024 Impact Recovery Systems, Inc.® All rights reserved. Impact Recovery Systems, OneBase, and Tuff Curb are registered trademarks of Impact Recovery Systems, Inc.® SlowStop® is a registered trademark of SlowStop Guarding Systems, LLC.®

The products mentioned in this document are covered by the following U.S. and international patent numbers: 7,195,422 | 7,621,691 | D937,700 | D620,823 | D620,824 | D620,825 | EP 2 267 225 | EP 2 888 412 | 9,938,677 | 11,136,735 | D932,875. Other U.S. and International patents pending.