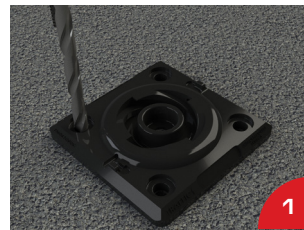




# Surface Mount Quarter Turn Base

TRAFFIC SAFETY

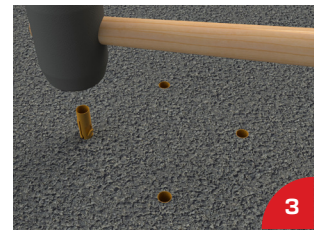
INSTALLATION INSTRUCTIONS | P/N SS3Y-42



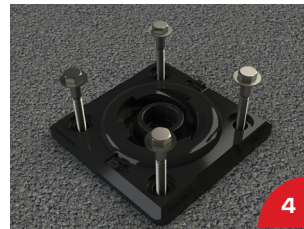
1 Place Base on surface with arrows aligned in the direction sign or post will face. Mark the anchor holes.



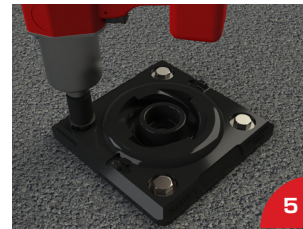
2 Drill all four (4) holes 3" (asphalt) to 3-1/2" (concrete) deep using 5/8" bit. Completely clean holes of debris.



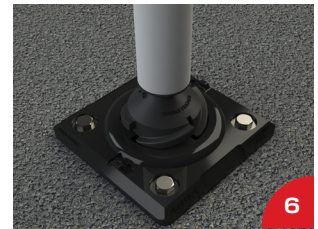
3 Using a small hammer, gently tap the plastic sleeves into the holes. The top of the sleeve should be flush with the surface.



4 Place the base over the anchors. Assemble washer to lag screws. Start lag screw through anchor holes into the plastic sleeves.



5 Use impact wrench with 3/4" socket to tighten the lag screws snug into the base. Washer will sit counter sunk beneath the surface of the base.



6 Insert the post into the quarter turn socket. Start with the sign facing 90° counter-clock wise to desired final position.

## Materials

Surface Mount Quarter Turn Base

4 - 16mm x 3" Plastic Sleeves

4 - 1/2" x 4" Lag Screws

4 - 1/2" Washers

## Tools Required

Hammer Drill

5/8" Hammer Drill Bit

Small Hammer

Impact Wrench

3/4" Socket

1/8 Allen Wrench (for tamper-proof model)

Compressed Air with Air Gun or Shop Vac and Brush



7 Push down and rotate the post clockwise until fully seated in the socket



8 For standard model base, use a small hammer to install L-shaped keeper pin(s) through the base and into post holes. Lay pin flat such that it lies flat in the retention socket on top of base.



8A If using a tamper proof base, install 1/4" x 1-1/4" stainless steel setscrew through base into one post hole. Setscrew should completely cover post thread end and prevent counterclockwise rotation under impact.

## Notes

- It is the responsibility of the installer to determine the suitability of the substrate for proper anchorage.
- Substrate shall be properly installed, in good repair, and generally crack free.
- Consult with owner's engineer as needed

4955 Stout Drive, San Antonio, TX 78219

(210) 736-4477 | 1-800-736-5256 | info@impactrecovery.com

impactrecovery.com

February 2024

©2024 Impact Recovery Systems, Inc.® All rights reserved. Impact Recovery Systems, OneBase, and Tuff Curb are registered trademarks of Impact Recovery Systems, Inc.® SlowStop® is a registered trademark of SlowStop Guarding Systems, LLC.®

The products mentioned in this document are covered by the following U.S. and international patent numbers: 7,195,422 | 7,621,691 | D937,700 | D620,823 | D620,824 | D620,825 | EP 2 267 225 | EP 2 888 412 | 9,938,677 | 11,136,735 | D932,875. Other U.S. and International patents pending.