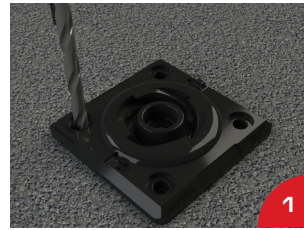




Surface Mount Quarter Turn Base with IM-CSA Concrete Anchors

TRAFFIC SAFETY

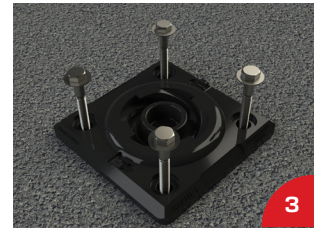
INSTALLATION INSTRUCTIONS | P/N BS-SMQT



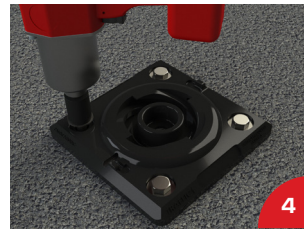
1 Place Base on surface with arrows aligned in the direction sign or post will face. Mark the anchor holes.



2 Drill all four (4) holes 3" (asphalt) to 3-1/2" (concrete) deep using 1/2" bit. Completely clean holes of debris.



3 Place the base over the holes. Hand start all anchors in holes to ensure correct alignment.



4 Use impact wrench with 3/4" socket to tighten the anchors snug into the base.



5 Insert the post into the quarter turn socket. Start with the sign facing 90° counter-clock wise to desired final position.



6 Push down and rotate the post clockwise until fully seated in the socket

Materials

- Surface Mount Quarter Turn Base
- 4 - 1/2" x 4" Concrete Screw Anchors

Tools Required

- Hammer Drill
- 1/2" Hammer Drill Bit
- Impact Wrench
- 3/4" Socket
- 1/8 Allen Wrench (for tamper-proof model)
- Compressed Air with Air Gun or Shop Vac and Brush



7 For standard model base, use a small hammer to install L-shaped keeper pin(s) through the base and into post holes. Lay pin flat such that it lies flat in the retention socket on top of base.



7A If using a tamper proof base, install 1/4" x 1-1/4" stainless steel setscrew through base into one post hole. Setscrew should completely cover post thread end and prevent counterclockwise rotation under impact.

Notes

- It is the responsibility of the installer to determine the suitability of the substrate for proper anchorage.
- Substrate shall be properly installed, in good repair, and generally crack free.
- Consult with owner's engineer as needed

4955 Stout Drive, San Antonio, TX 78219
(210) 736-4477 | 1-800-736-5256 | info@impactrecovery.com

impactrecovery.com

August 2024