



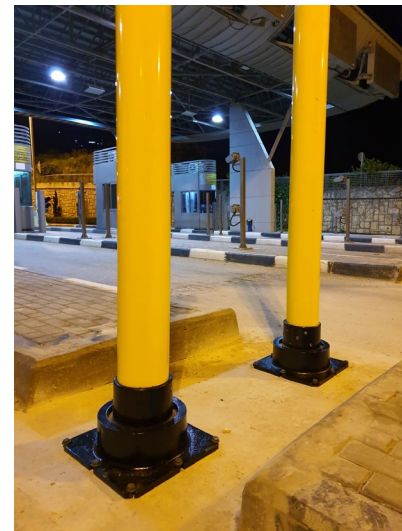
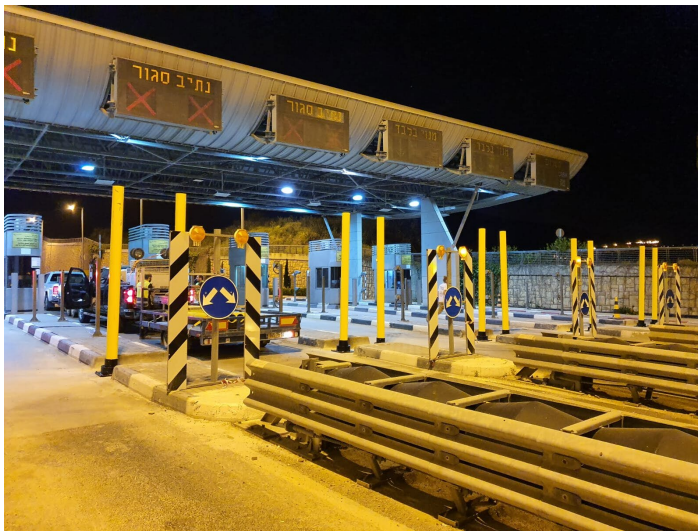
Case Study: Protection from Oversized Vehicles in Toll Lanes

Customer

Israeli Toll Tunnel

Situation

At a toll station protecting both the toll booth as well as the operator inside can sometimes be a difficult task. Finding a product to keep over-sized vehicles from trying to pass through the narrow lanes had proved to be a challenge. The options that had been previously used were much more complex but never durable enough.



Solution

The Project Manager asked Impact Recovery as well as one of its competitors to take part in a pilot program to check which product would be able to withstand the expected speeds and heavy traffic flow. Impact Recovery installed the SlowStop® Type 3 (6") rebounding steel bollard in 3m height. After 3 months of testing, it was determined that SlowStop was the superior product for this installation, and they requested 40 more bollards to complete the toll station.

Knowing that Impact Recovery's SlowStop bollards would be able to maintain its integrity despite the heavy flow of daily traffic gave peace of mind to knowing both the toll booth and the operator would be kept out of harm's way. At the end of the project, the project manager was very pleased with the results of using Impact Recovery's SlowStop protective guarding products and would certainly use them for future projects.