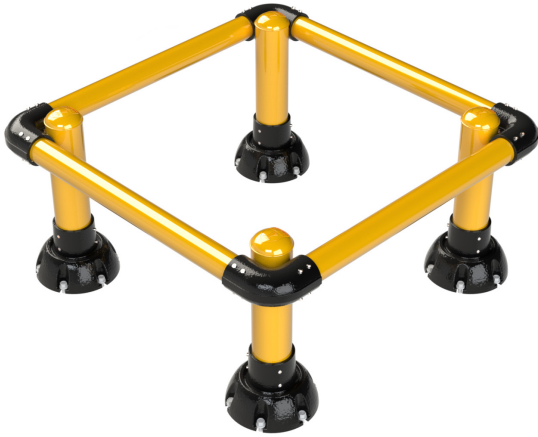




5" IronFlex Column Protectors

PROTECTIVE GUARDING - SLOWSTOP®

SPEC SHEET | P/N **SS5Y-24-CP**



Product Specifications

Color	RAL 1023 Yellow Pipe on RAL 9005 Black Pedestal
Diameter	5.56" uprights, 4" crossbeams
Dimensions	Designed for column
Impact Rating	I20-7 (44,400 joules)
Temperature Rating	-40°F - 150°F
Pipe Coating	60 µm Galvanized + 150 µm Polyester Outdoor Powder Coating
Cast-Iron Coating	Environmentally Friendly Water-based E-Coat + Polyester Outdoor Powder Coating
Set Screws	M16
Anchor Screws	24 5/8" x 5-1/2"

Recommended Uses

- Designed for higher-impact protection in busy facilities.
- Shields building columns from frequent forklift and equipment traffic.
- Ideal for distribution centers, industrial plants, and production lines.
- Helps maintain structural integrity of larger support columns.
- Enhances worker safety in heavy-use areas.

Impact Chart

Impact Angle	90°	45°	30°
Rating (joules)	44,400	88,827	177,600
ANSI MH 31.2	I20-7	calculated	calculated
Mass (lbs)	Speed (mph)	Speed (mph)	Speed (mph)
10,000	9.9	14.0	19.8
20,000	7.0	9.9	14.0
30,000	5.7	8.1	11.4
40,000	4.9	7.0	9.9
80,000	3.5	4.9	7.0

4955 Stout Drive, San Antonio, TX 78219
 (210) 736-4477 | 1-800-736-5256 | info@impactrecovery.com
impactrecovery.com

October 2025

