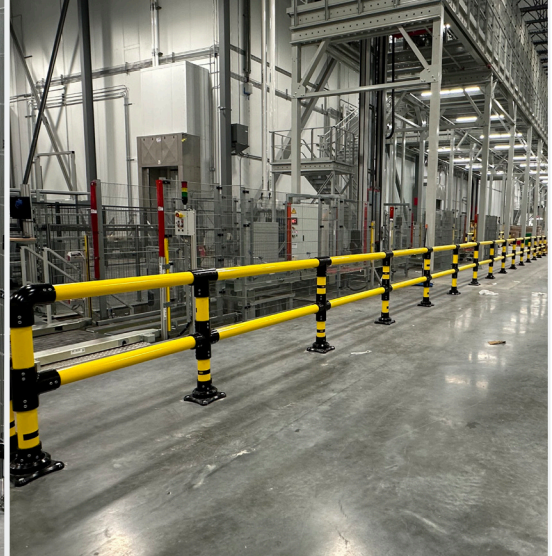
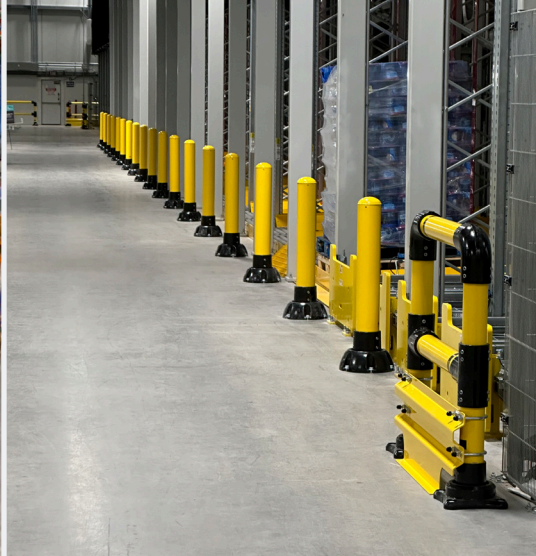
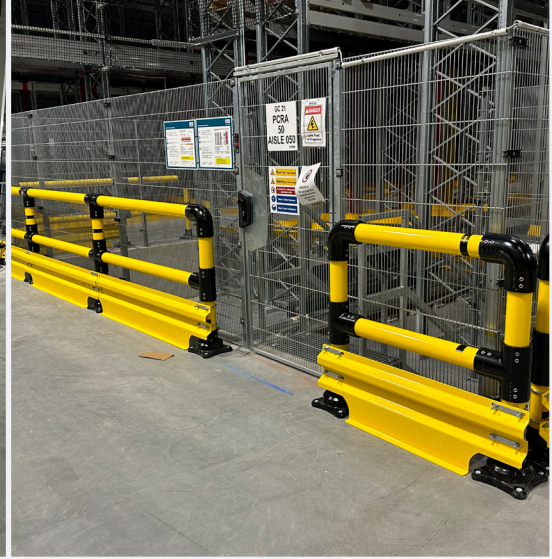
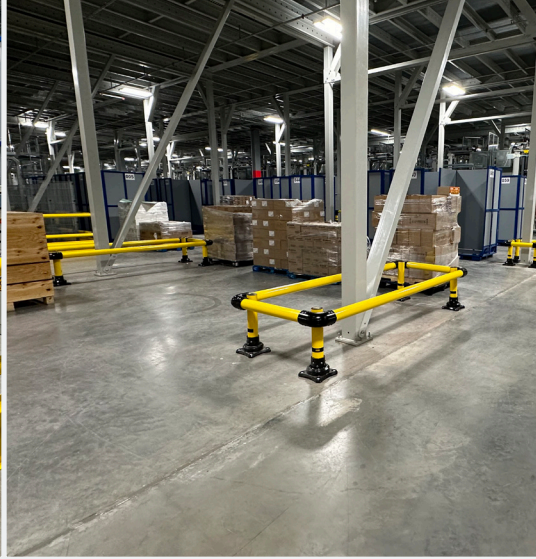


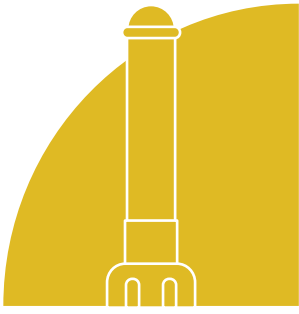


Built to Protect What Matters



Cold Storage Safety Solutions





SlowStop®: Our Revolutionary Energy-Absorbing Protective Guarding System

SlowStop is the premier protective guarding product line. With rugged construction and innovative rebounding technology, SlowStop absorbs more impacts and lasts longer providing our customers with better value and greater peace of mind - year after year. Offering the strongest flexible protection available on the market, SlowStop is a modular, energy-absorbing steel guarding system that protects your most valuable assets.

How It Works

During a collision, the kinetic energy of the impact is absorbed by an elastomer in the base of the vertical post. This allows the post to tilt approximately 20° as it progressively absorbs energy, softening the impact. After the impact, the post returns upright, leaving the guard intact and ready to perform again.

SlowStop is designed as an easily maintained modular system that prevents damage. Modular connectors create fences, corner guards, column protectors, rack end guards, and so much more!

Benefits

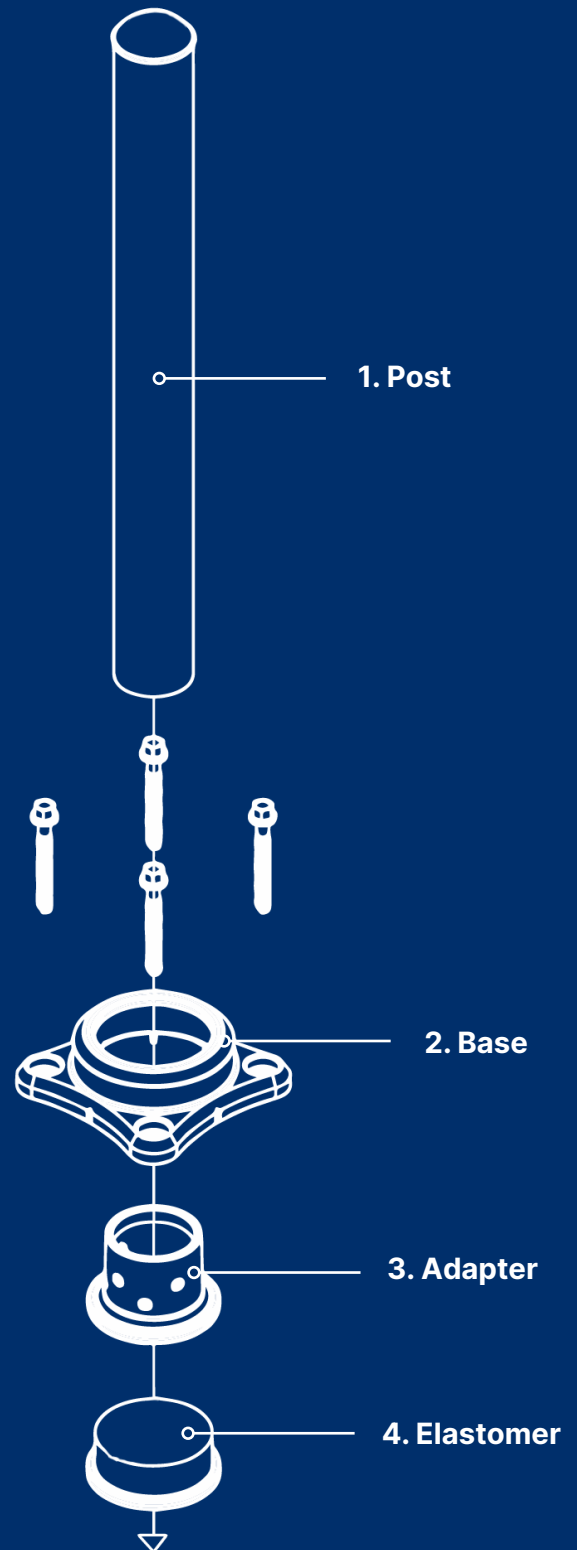
Increased personnel and pedestrian safety

Flexible system absorbs energy, reducing damage to assets, equipment, and pedestrians

Simple installation and instantly operational

Modular steel system can create any unique custom barrier needed for your facility

Easy relocation and retrofitting



The system is made up of four main components (pictured above):

1. Post (standard schedule 40 / ISO pipe or equivalent)
2. Base
3. Adapter
4. Elastomer (energy absorbing)

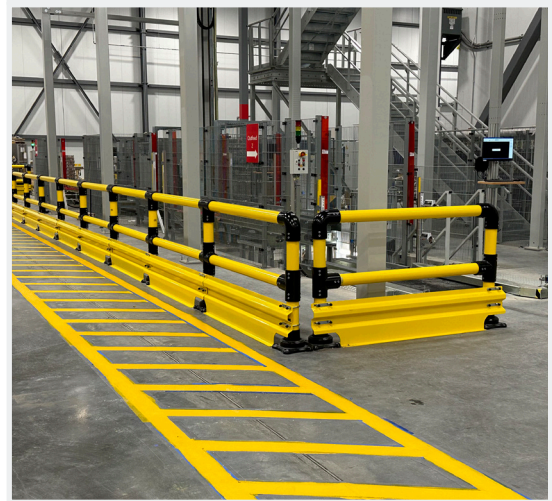
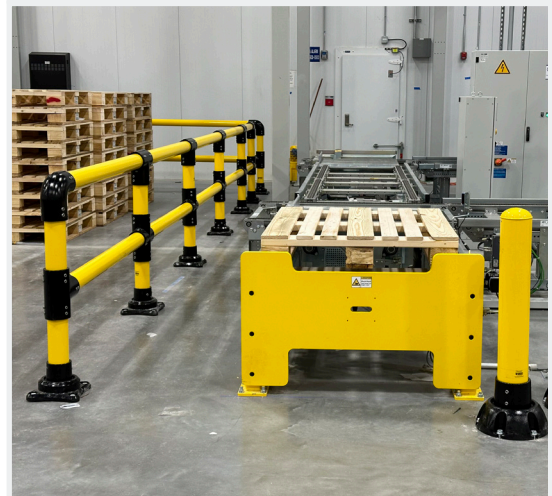


Protect Your Cold Storage Facility with SlowStop® Protective Guarding

SlowStop is the premier protective guarding product, offering the strongest steel flexible protection on the market. Its rugged construction and innovative rebounding technology meet the demands of cold storage facilities. Unlike brittle plastics, SlowStop's steel and ductile iron construction performs reliably down to -40°F, ensuring structural integrity in critical environments. SlowStop's energy-absorbing design minimizes damage and simplifies maintenance, providing unparalleled durability and effectiveness for your facility.

Product Benefits

- **Temperature Resistance:** The SlowStop system uses a special ductile cast iron for the base and adapter components, allowing us to rate products to -40°. This makes it suitable for cold environments where other materials might become brittle and fail.
- **Durability:** SlowStop bollards are designed to be durable and maintain their integrity under various conditions, including low temperatures.
- **Flexibility and Impact Absorption:** In cold storage areas, collisions with equipment such as forklifts can be common. The ability of SlowStop bollards to absorb and dissipate impact energy reduces the risk of damage to both the bollard and the impacting vehicle, which is crucial in maintaining operational efficiency and safety in a busy cold storage environment.
- **Maintenance:** SlowStop systems require less maintenance compared to traditional rigid bollards. This is particularly beneficial in cold storage areas where maintenance can be more challenging and costly due to the controlled environment.
- **Safety:** The reduced impact force helps in minimizing the risk of injury to personnel and damage to the stored goods, which is essential in a cold storage setting where safety and preservation of goods are paramount.



Bollards

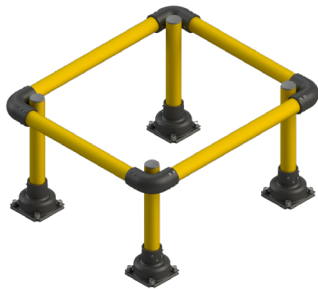
PRODUCTS: REBOUNding STEEL BOLLARD

Our rebounding steel bollards are successfully used in commercial locations, industrial environments, logistic sites, and for traffic control situations. Their strength rivals that of traditional embedded bollards with lower costs and less hassle.



Column Protection

PRODUCTS: COLUMN PROTECTOR



These column protectors utilize our patented rebounding guarding technology to combine four bollards into a complete barrier that protects critical columns from potential catastrophic failure.

Guardrail Systems

PRODUCTS: HORSESHOE, IRONFLEX RAILING, FORKLIFT PROTECTION PLATE

With our cast-iron elbow, tee, and cross-shaped tubular joints, we can easily configure custom guarding such as u-shaped brackets, safety railings, protection buffers, fences, and guardrail systems.



Rack End Protection

PRODUCTS: RACK END GUARD



Specially designed for common pallet rack sizes, these IronFlex guards protect your rack ends from damage while resisting damage themselves.



Take the Next Step in Protecting Your Facility

By choosing Impact Recovery, you are making a commitment to improving the safety of your facility. Together, we can create a safer, more sustainable future.

- **Free Consultations:** Schedule a free consultation with our safety experts to assess your facility's needs. We'll provide personalized recommendations to enhance your protection.
- **On-Site Assessments:** Our team can visit your location to conduct a thorough on-site assessment, identifying potential hazards and suggesting optimal guarding solutions.
- **Custom Solutions:** We understand that every facility is unique. That's why we offer custom solutions tailored to your specific requirements, ensuring maximum protection and efficiency.
- **Installation Training:** Our team will provide on-site installation training. This service is an added benefit that we encourage to ensure a seamless and hassle-free process.

Contact for Details & Options

For more information on how Impact Recovery's SlowStop® Protective Guarding products can benefit your community, contact us today:

Email: info@impactrecovery.com
Phone: (210) 736-4477 | 1-800-736-5256
Website: impactrecovery.com

4955 Stout Drive, San Antonio, TX 78219 | (210) 736-4477 | 1-800-736-5256 | impactrecovery.com

©2025 Impact Recovery Systems, Inc.® All rights reserved. Impact Recovery Systems, OneBase, and Tuff Curb are registered trademarks of Impact Recovery Systems, Inc.® SlowStop® is a registered trademark of SlowStop Guarding Systems, LLC.® Products are covered by U.S. and international patents. Other U.S. and international patents pending.
January 2025